

Serving Students with Learning Differences



AS THEY TRANSITION TO, PERSIST, AND SUCCEED IN THEIR
EDUCATIONAL AND VOCATIONAL ENDEAVORS



TUTORING. MENTORING. COACHING.

IMPACT REPORT

NORTHBRIDGEAZ.ORG

501C(3) NON-PROFIT
EIN: 47-1080353

Letter from the Executive Director



TUTORING. MENTORING. COACHING.

7600 N. 15th Street, Suite 150. Phoenix, AZ 85020
success@northbridgeaz.org
(401) 321-4059

September 29, 2023

Dear Partners, Families, & Community Members,

NorthBridge College Success Program ("NorthBridge") is approaching 14 years of service and impact. NorthBridge started with a simple but very powerful belief: we provide the **opportunity** for students with **learning differences** to create **individual success** across the **community** of Arizona. We believe that:

- All students deserve the opportunity to believe that 'College is Possible'.
- All students deserve to experience success in their pursuit of a career pathway.
- Success is the result of individuals, families, communities, and business partners working together & collaborating to achieve desired outcomes.

It all started when a group of passionate community members, decided that they would start a non-profit to serve students with learning differences succeed in the college, vocational program, certification program, and /or career path of their choice. Students with learning and attention issues are as smart as their peers and, with the right support, can achieve at high levels. We have discovered that identifying the best ways to serve students with learning differences requires time, thoughtfulness, engagement, and resources. If we believe that students with learning differences can achieve their goals, then we must actively engage, advocate, and build relationships with our students, families, and community partners.

As we celebrate our impact in 2023 and undertake work in 2024, I invite you to join NorthBridge to create pathways and opportunities for our students ages 14+ in AZ with learning differences

With Gratitude,

Daylee Magneson
Executive Director, NorthBridge



Board of Directors

Member	Position	Professional Affiliation
Nancy Heller	Chair	Community Advocate
Caden Gillespie	Treasurer	Business Operations, ASU
Brandon DePesa	Secretary	Engineering Management, SUSE
Lori Kirsch-Goodwin	Officer	Owner, Kirsch-Goodwin & Kirsch, PLLC
Julia Fields	Officer	Academic Success Advising Coordinator, ASU
Julie Heineking	Officer	Experienced Community Specialist, AZDES
Byron Harrod	Officer	CFO, Valley Forge & Bolt MFG

Staff

Name	Position
Daylee Magneson	Executive Director
Ebony Lorang	Program Director
Angel Villegas	Lead Academic Coach
NorthBridge Academic Coaches	



BY THE NUMBERS- PROGRAMS

Our existing programs and services are the foundational building blocks for our future. NorthBridge continues to build current programs and services to address opportunities and meet the needs of students across Arizona.

We will continue to focus our fundraising efforts on revenue generation from the following areas:

- Fee for service
- Sponsorship programs
- Government partnerships
- Annual Events

We are constantly innovating our (4) main programs:

- High School Success
- College Success
- Test Prep Success
- Career Prep Success

Sessions occur at the same days and times each week, with the same academic coach. Students work on time management, communication with teachers, e-mail etiquette, organization, planning ahead, self-advocacy skills, accountability, and submitting assignments accurately.



As of the 2022-23 school year, students that worked with NorthBridge maintained a cumulative Grade Point Average of 3.22.

- Test Prep (GED, ACT/SAT)
- High School Classes
- Entrance Exams
- Community College
- Universities
- Trade Schools
- Certifications
- Career Prep

NorthBridge has helped students of all levels succeed at all different types of educational goals throughout the Valley and around the country at various schools and universities in and out of state.



On average, students that work with NorthBridge take between 4-6 courses during an academic year, totaling 15-16 credits. Additionally more than 90% of enrolled courses end with a passing grade! Since 2014, we have helped more than 300 students pass more than 3,200 different courses at more than 40 schools.





BY THE NUMBERS - FINANCIALS

For Fiscal Year 2023 (July 1, 2022- June 30, 2023), NorthBridge was able to serve students working towards their GED, High School Diploma, Associates Degree, Bachelors Degree, certification, and career of choice.

Statement of Financial Position:

- Largest portion of assets is cash.
- Largest liability is unearned revenue.
- Largest Net-Asset is unrestricted funds.

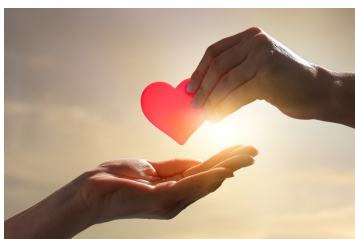
Thank you to our families, donors, and community members!

Statement of Activities:

- Raised over \$34,000 at our 1st annual community breakfast!
- Brought in over \$280,000 through tuition, state service contracts, and fundraising.
- Ended the fiscal year with a surplus of over \$11,500.

Grants Received in FY 2023:

- **\$5,000** for foster youth from Beaty Martinez Foundation
- **\$5,000** general donation from the Jewish Communal Fund





MEETING THE NEED

MISSION

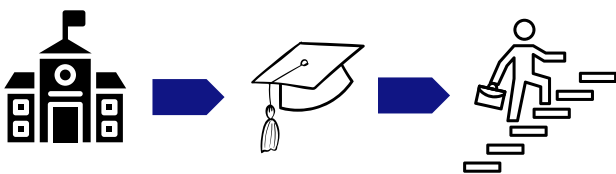
The mission of NorthBridge is to provide support, resources, and guidance to students with learning differences as they transition to, persist and succeed in higher educational and vocational opportunities.

STUDENT RETENTION

Student recruitment and enrollment is essential to the expansion of NorthBridge services. Growth of the student population will come from fee-based programs, government partnerships, and sponsorship programs. The total student count is based on the combination of the three service areas. The breakdown is listed below, with data from the 22-23 school year.

School Year	Fee-Based	Government Partnerships (VR Contracts, etc.)	Sponsorship	Total
22-23	31	25	1	57
23-24	31	30	3	64
24-25	45	35	5	85

Students that receive coaching and tutoring services are outperforming their peers at the community college level with successful course completions. NorthBridge College Success Program makes College Possible. According to the AZDE Post-Secondary report, 83% of graduating high school students with documented disabilities do not go on to post-secondary education. For those that do, only 12% of those students decide to enroll at community college, while 5% enroll at university. NorthBridge strives to bridge the gap for students with learning differences.



We assist students making the **transition** from **high school to college**, and now, from **college to career!**

EXPANSION

PARTNERSHIPS

We are excited to highlight we were awarded (4) new contracts with the Arizona Department of Economic Security Vocational Rehabilitation Services (VR) in the Spring of 2023 to assist students in their careers. This covers the soft and executive functioning skills of communication, time management, self-advocacy, teamwork, and many other skill sets as our students move on into their careers. Below are the (5) AZDES contracts NorthBridge has secured.

1. Tutoring

NorthBridge provides individualized tutoring to students in college courses with learning differences.

2. Career Exploration (CE)

We provide individualized instructions and assistance to students in (3) career fields of their choice.

3. Supported Education (SE)

We help the student select a career suitable to the student's abilities, interests, and values that matches their vocational strengths and functional limitations.

4. Work Adjustment Training (WAT)

NorthBridge provides soft skills and transition to employment, including Communication, Teamwork, Critical Thinking and Problem-Solving, Task/Time Management & Organization, Attendance, Manage Symptoms/Effects of Disability, Appearance and Hygiene, & Self-management.

5. Rehabilitation Instructional Services (RIS)

NorthBridge assists students with orientation and adjustment to disability, orientation and mobility training services, and manual adaptive communication training.





STUDENT TESTIMONIALS



WHAT OUR ALUMNI ARE SAYING



Justin



“I have just recently completed my associates degree and I definitely couldn’t have done that without NorthBridge ...[they] fill in that uncertainty and helped me ease into it. You learn that it is okay to ask questions. This is college and you are supposed to push everything you know because that’s how you’re going to learn. This is the environment that allows for that. I am sure practically anyone [from NorthBridge] would be willing to explain or help you if you are not understanding it”



Ryan

“I learned to manage my time better, take time to get my work done, do my classes, and stay on top of everything. I also was comfortable making conversation with my tutors and asking questions.”

Dalia

“NorthBridge has helped me improve my time management skills, and I am doing well in my classes.”



WITH GRATITUDE

DOLLAR FOR DOLLAR IMPACT

Donations received through our annual breakfast and throughout the year are used in the following ways:

- Providing individualized, comprehensive 1:1 support for students with learning differences (LD) in executive functioning and academic tutoring.
- LD includes Autism spectrum, ADHD, Dyslexia, Non-Verbal Processing Disorder, Anxiety Depression, and many other differences.
- Sessions are at the same days/times each week with the same NorthBridge coach.
- Covering various skill sets, including time management, prioritization, organization, self-advocacy, setting SMART goals, and communication with instructors.

Every NorthBridge academic coach has a Bachelor's degree in an array of fields. Many are continuing their education and pursuing their Master's degrees while simultaneously working as a NorthBridge coach.

The NorthBridge Bienstock Scholarship Fund has increased to

\$21,000

due to your generous financial support!

This means we can serve

(6) students for 1 year

at 0 cost to the student!